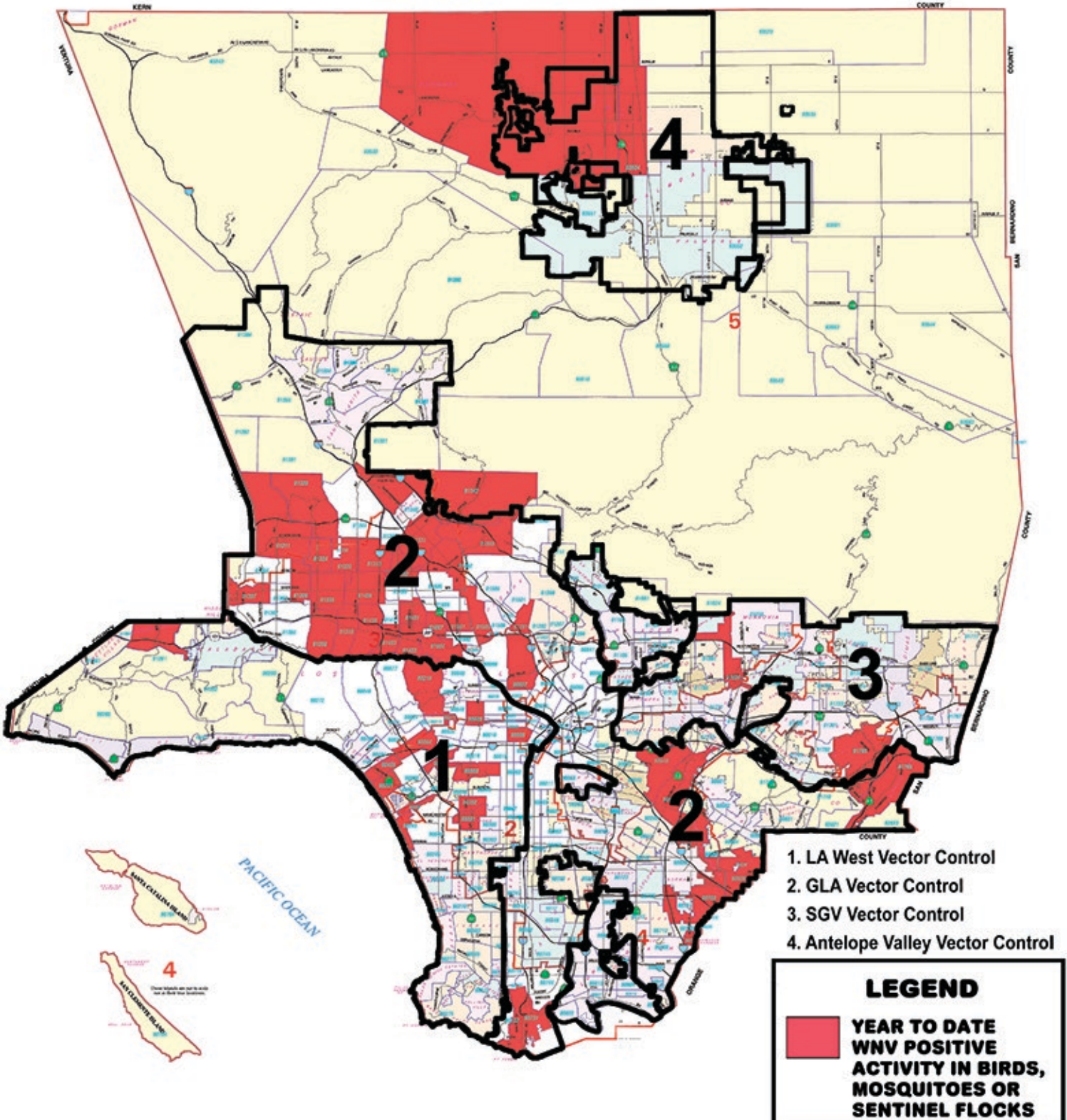


# 2018 LOS ANGELES COUNTY WEST NILE VIRUS POSITIVE ACTIVITY BY ZIP CODE



**2018 POSITIVE WNV ZIP CODES - LOS ANGELES COUNTY**  
**DEAD BIRD, SENTINEL FLOCK, or MOSQUITO INFECTIONS**  
**As of 12/14/18**

Zip Code	City	Dead Birds (Total # of Pos.) / (Date First Positive Result Recorded)		Sentinel Flocks (Total # of Pos. Chickens) / (Date First Positive Reported )		Mosquito Pools (Total # of Pos.) / (Date First Positive Result Recorded)	
90006*	Los Angeles					1	11/13/18
90008*	Baldwin Hills			2	10/2/18		
90027	Los Feliz					1	9/25/18
90036*	Los Angeles	1	10/9/18				
90064*	Los Angeles	1	9/4/18				
90094* †	Los Angeles					1†	8/10/18
90210*	Los Angeles			4	10/2/18		
90211*	Beverly Hills	1	8/10/18				
90232*	Culver City	1	9/25/18				
90291*	Venice	2	10/16/18	6	10/2/18	2	10/30/18
90293*	Playa del Rey			6	8/6/18	2	10/9/18
90301*	Inglewood			4	11/13/18	3	10/9/18
90302*	Inglewood					2	8/21/18
90405*	Santa Monica	1	10/2/18				
90638	La Mirada					1	8/21/18
90640	Montebello					3	8/21/18
90660	Pico Rivera					1	9/18/18
90670	Santa Fe Springs					1	9/25/18
90703	Cerritos					1	9/25/18
90716	Hawaiian Gardens					1	10/2/18
90731	San Pedro					1	9/25/18
91006	Arcadia					1	9/4/18

† St. Louis Encephalitis Virus (SLEV) infection

\* Area served by Los Angeles County West Vector Control District

\*\* Portion of area served by Los Angeles County West Vector Control District

**Bold Text** – Most recently confirmed infections

**2018 POSITIVE WNV ZIP CODES - LOS ANGELES COUNTY**  
**DEAD BIRD, SENTINEL FLOCK, or MOSQUITO INFECTIONS**  
**As of 12/14/18**

Zip Code	City	Dead Birds (Total # of Pos.) / (Date First Positive Result Recorded)		Sentinel Flocks (Total # of Pos. Chickens) / (Date First Positive Reported )		Mosquito Pools (Total # of Pos.) / (Date First Positive Result Recorded)	
91040	Los Angeles	1	9/18/18			1	10/2/18
91201	Glendale	1	9/4/18				
91301*	Agoura Hills	1	6/26/18				
91306	Winnetka					1	10/9/18
91307	West Hills					1	10/16/18
91311	Chatsworth					1	10/9/18
91316	Encino					3	8/14/18
91324	Northridge					1	9/25/18
91325	Northridge					4	8/14/18
91326	Porter Ranch					3	7/31/18
91331	Arleta					2	9/18/18
91335	Reseda					2	9/11/18
91342	Sylmar	1	10/2/18				
91343	North Hills					1	9/11/18
91352	Sun Valley	1	10/2/18			2	8/21/18
91356	Tarzana	1	10/9/18				
91401	Valley Glen					2	10/2/18
91402	Panorama City					3	7/17/18
91403	Sherman Oaks	1	8/21/18			1	9/11/18
91406	Van Nuys					7	8/14/18
91423	Sherman Oaks	2	8/28/18			4	7/31/18
91436	Encino			8	8/21/18	6	8/14/18

† St. Louis Encephalitis Virus (SLEV) infection

\* Area served by Los Angeles County West Vector Control District

\*\* Portion of area served by Los Angeles County West Vector Control District

**Bold Text** – Most recently confirmed infections

**2018 POSITIVE WNV ZIP CODES - LOS ANGELES COUNTY**  
**DEAD BIRD, SENTINEL FLOCK, or MOSQUITO INFECTIONS**  
**As of 12/14/18**

Zip Code	City	Dead Birds (Total # of Pos.) / (Date First Positive Result Recorded)		Sentinel Flocks (Total # of Pos. Chickens) / (Date First Positive Reported )		Mosquito Pools (Total # of Pos.) / (Date First Positive Result Recorded)	
91505	Burbank					1	8/28/18
91601	N. Hollywood	1	10/2/18			3	9/11/18
91604	Studio City					2	9/11/18
91607	Valley Village					1	10/2/18
91765	Diamond Bar					1	10/16/18
91789	Walnut	1	6/12/18				
93534	Lancaster					1	10/2/18
93536	Lancaster	1	7/31/18				

TOTALS						
Number of Positive Zip Codes	Positive Dead Birds	New Positives	Positive Sentinel Flocks	New Positives	Positive Mosquito Pools	New Positives
52 out of 361	19	0	30	0	76	0

† St. Louis Encephalitis Virus (SLEV) infection

\* Area served by Los Angeles County West Vector Control District

\*\* Portion of area served by Los Angeles County West Vector Control District

**Bold Text** – Most recently confirmed infections