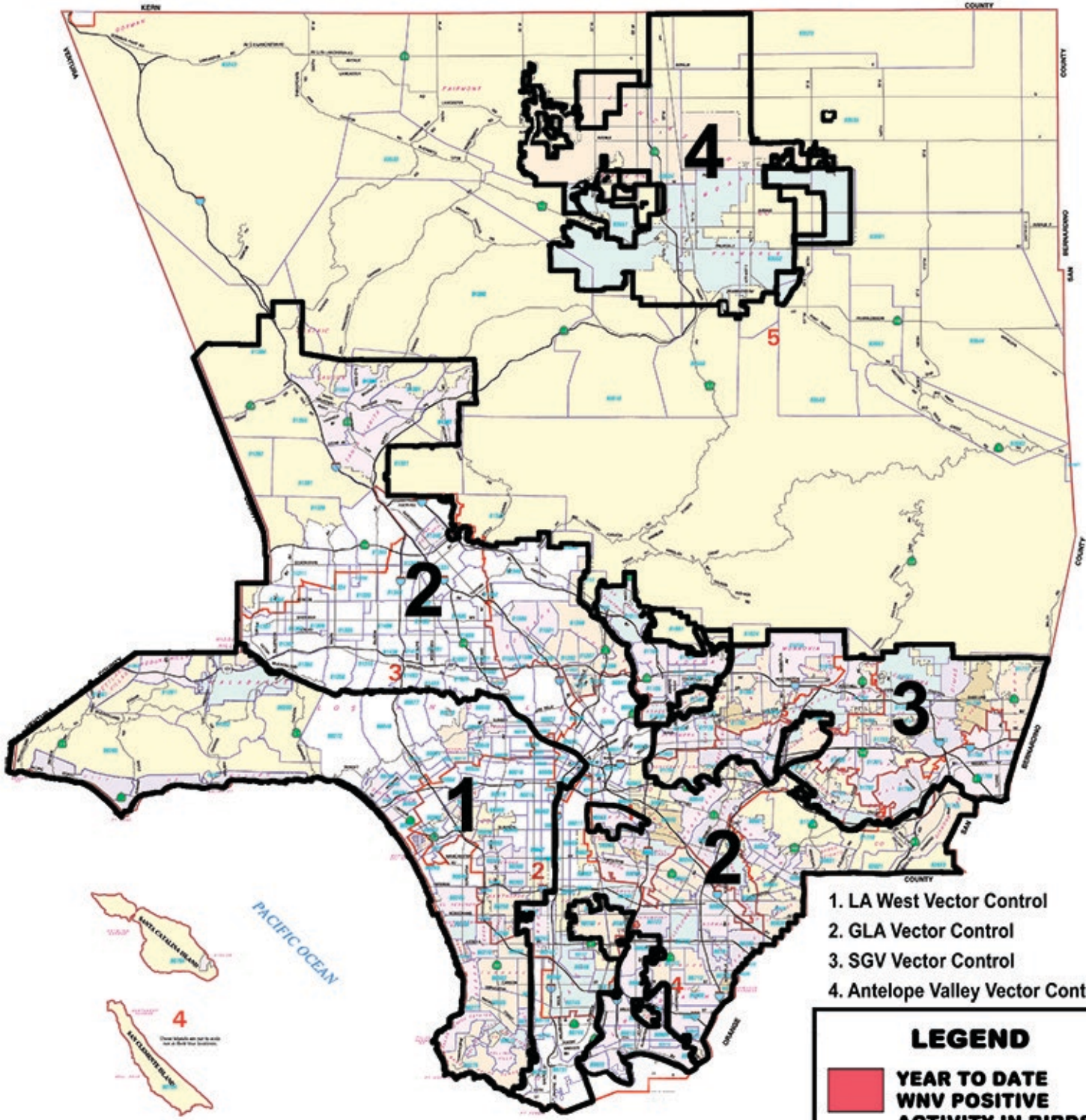



2019 LOS ANGELES COUNTY WEST NILE VIRUS POSITIVE ENVIRONMENTAL INDICATORS BY ZIP CODE



- 1. LA West Vector Control
- 2. GLA Vector Control
- 3. SGV Vector Control
- 4. Antelope Valley Vector Control

LEGEND

 **YEAR TO DATE WNV POSITIVE ACTIVITY IN BIRDS, MOSQUITOES OR SENTINEL FLOCKS**



**2019 LOS ANGELES COUNTY WEST NILE VIRUS POSITIVE
ENVIRONMENTAL INDICATORS BY ZIP CODE
DEAD BIRD, SENTINEL FLOCK, OR MOSQUITO INFECTIONS
As of 5/14/19**

Zip Code	City	Dead Birds (Total # of Pos.) / (Date First Positive Result Recorded)		Sentinel Flocks (Total # of Pos. Chickens) / (Date First Positive Reported)		Mosquito Pools (Total # of Pos.) / (Date First Positive Result Recorded)		Dead Squirrels (Total # of Pos.) / (Date First Positive Result Recorded)	

TOTALS								
Number of Positive Zip Codes	Positive Dead Birds	New Positives	Positive Sentinel Flocks	New Positives	Positive Mosquito Pools	New Positives	Positive Squirrels	New Positives
0 out of 361	0	0	0	0	0	0	0	0

* Area served by Los Angeles County West Vector Control District

** Portion of area served by Los Angeles County West Vector Control District

Bold Text – Most recently confirmed infections